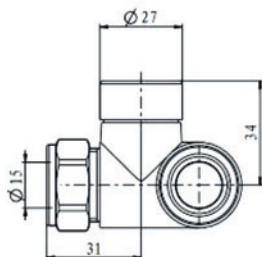
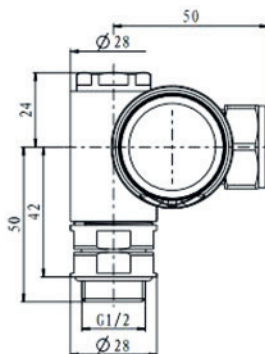
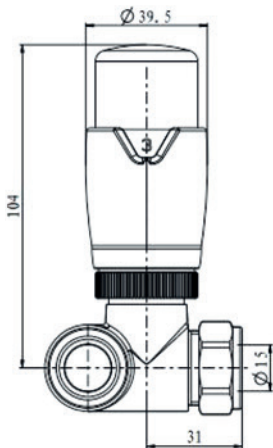


Dual Fuel Corner Valves

Dual Fuel TRV Corner Valve



Product Information

Valve to radiator Valve to Pipe Sensor
Type Material: Brass Warranty: 3 Years
1/2"
15mm Compression
Liquid Sensor
Response Time: not exceed 40 Mins
Hysteresis : <1 K
Weight: 825g
Weight boxed: 836g
Bi-Directional Valve Body
With Frost Protection: When the scale
is set "❄"

Pressure Rating

Max Test Pressure: 10 Bar
Max Pressure differential: 0.1 Mpa

Temperature Ratings

Max flow temperature: 120 °C
Temperature adjustment range: 7-28
Differential pressure influence: <1 K
Max ambient temperature: <1.5 K
Water temperature effect: /

Flow Ratings

Nominal flow rate: Min setting 212.1 kg/h,
when the temperature is on 6.3 °C.
Max setting 210.1 kg/h, when the
temperature is on 28.83 °C.
Max Flow Rate 173 kgs/h