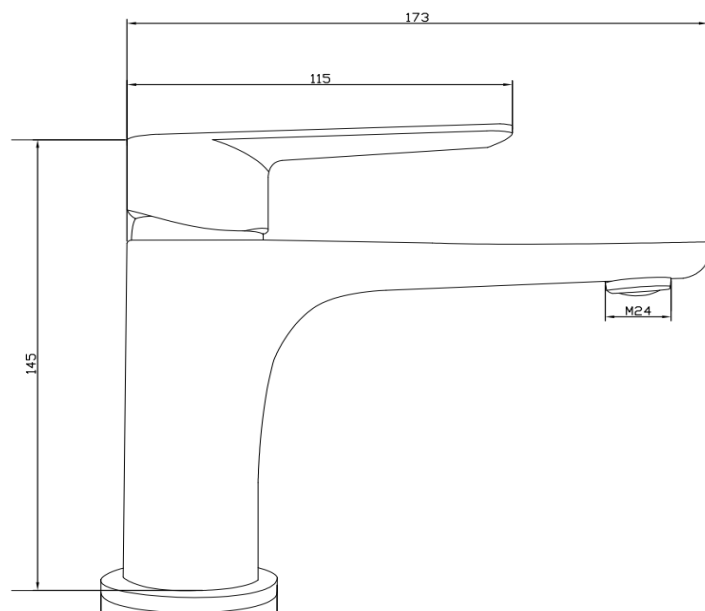


DATA SHEET

THE TUNBRIDGE WELLS
Brassware Co.

Rusthall Basin Mono Mixer (Inc. Sprung Waste)



Product Code: Chrome 167.RHBM

Construction: Brass Body,
Zinc-alloy handle

Finishes: Chrome

Water Pressure: Min. 0.2 bar, Max. 6.0 bar

Plumbing Systems: Suitable for all plumbing systems, Hot and Cold water pressure preferably balanced
Max. supply pressure differential requirement no greater than 5:1

Cartridge: 35mm ceramic disc cartridge

Aerator: Spout aerator

Fitting: G½" flexi tails

Packaging: 46 x 28 x 34cm / carton
(12 boxes)

Dimension: 27 x 22 x 8cm / box
Weight: 1.13Kg / box

Guarantee: 10 years against manufacturing faults (Excluding serviceable parts)

Additional Information: Supplied with Sprung Waste

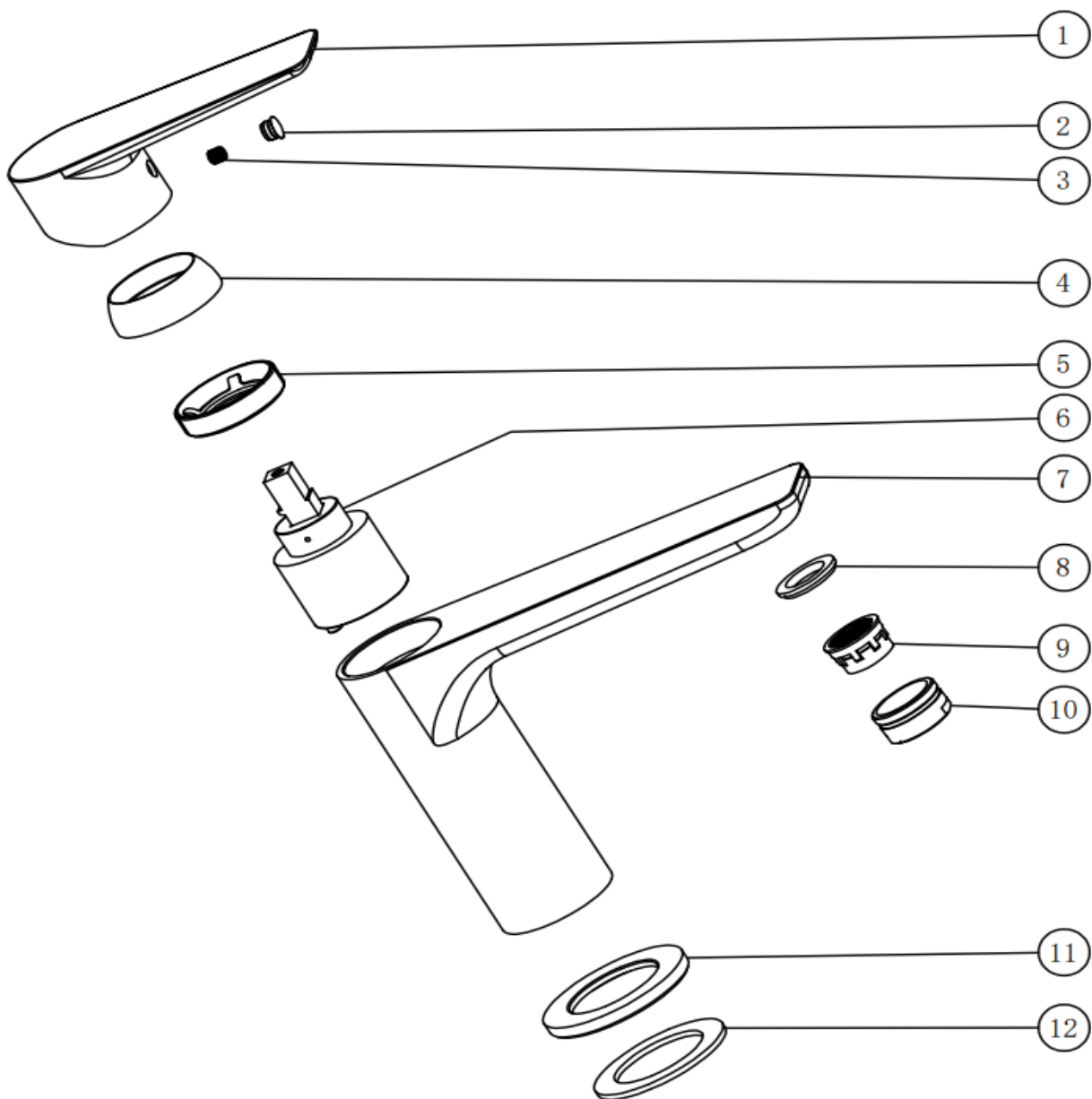
Flow Rates (Litres per minute)

System Pressure	0.1 Bar	0.2 Bar	0.3 Bar	0.5 Bar	1.0 Bar	1.5 Bar	2.0 Bar	3.0 Bar	4.0 Bar	5.0 Bar
167.RHBM	1.0	3.1	4.1	5.6	8.6	10.6	12.8	16.1	18.9	21.3

All dimensions are in millimetres unless otherwise stated. The information contained on this page was correct at date of issue. Fitting dimensions are provided as a guide only. Some variation may occur due to manufacturing tolerances. We pursue a policy of continuing improvement in design and performance of our products and so reserve the right to change specifications without prior notice.

167.RHBM

THE TUNBRIDGE WELLS
Brassware Co.



NO	Description	QTY
1	Handle	1
2	Indice cap	1
3	Screw	1
4	Collar	1
5	Lock nut	1
6	35mm Cartridge	1
7	Body	1
8	Washer	1
9	Aerator	1
10	Aerator Cap	1
11	Base Plate	1
12	Washer	1