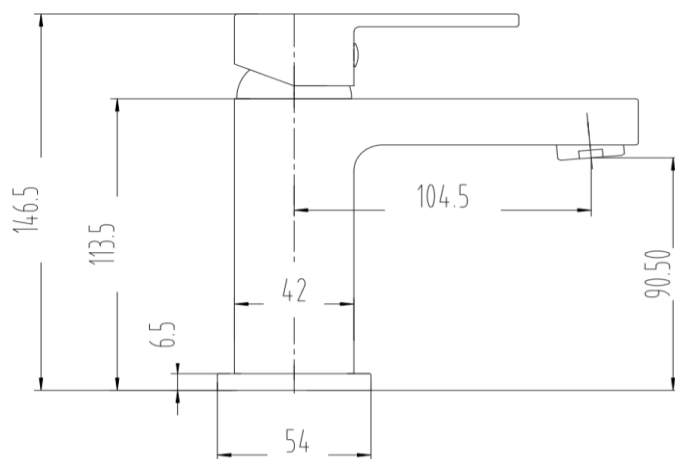


Lamberhurst Mono Basin Mixer - inc. G1¹/₄ Sprung Waste (Chrome)



- Product Code:** 167.LHBM
- Construction:** Brass Body (CuZn40Pb2), EN CW617N (equivalent to BS CZ122) Zinc-alloy Handle
- Finish:** Chrome plated to BS EN 248
- Water Pressure:** Min. 0.2 bar, Max. 6.0 bar
- Plumbing Systems:** Suitable for all plumbing systems, Hot and Cold water pressure preferably balanced. Max. supply pressure differential requirement no greater than 5:1
- Standards:** Complies with BS6920, BS EN200

Certification: WRAS approved and certified

Cartridge: 35mm Ceramic disc cartridge

Aerator: Spout aerator

Fitting: M12 x 350mm G1/2" BSP Female Flexi Tails

Packaging: 57 x 37.5 x 22cm/carton (10 boxes), Dimension: 20.6 x 18 x 11.1cm/box; Weight: 1.55Kg / box

Guarantee: 10 years against manufacturing faults (Excluding serviceable parts)

Additional Information: Supplied with G1¹/₄" sprung waste

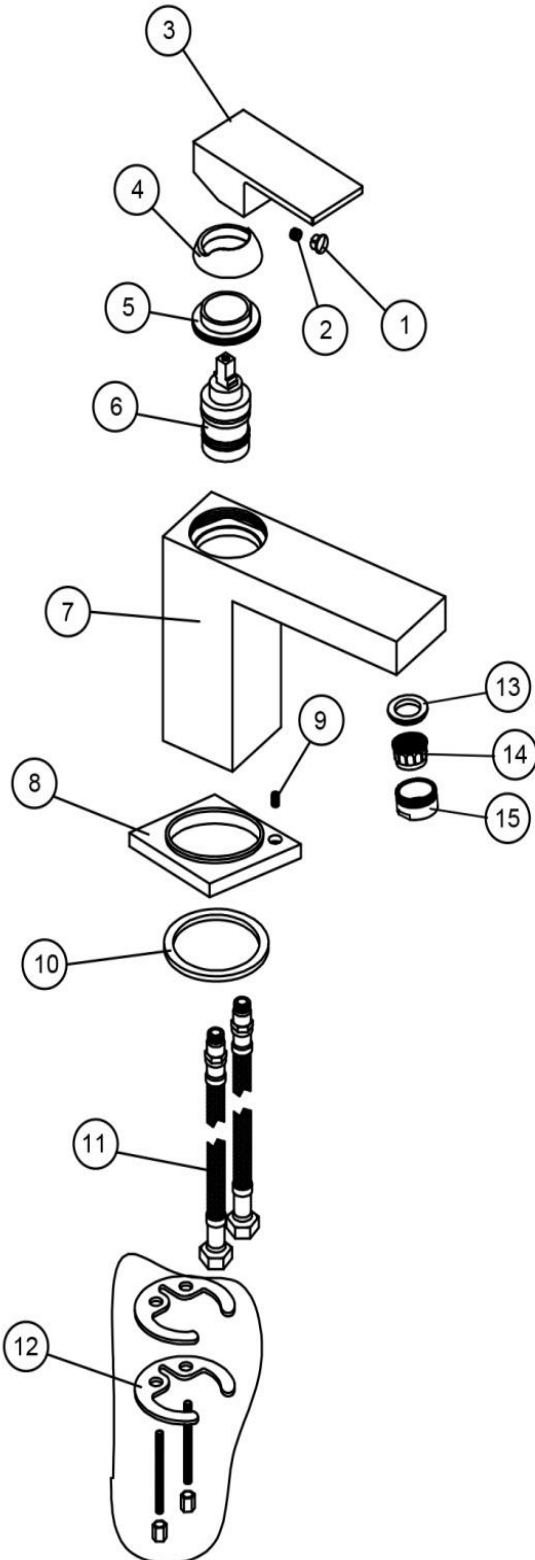
Flow Rates (litres per minute)

System Pressure	0.1 Bar	0.2 Bar	0.3 Bar	0.5 Bar	1.0 Bar	1.5 Bar	2.0 Bar	3.0 Bar	4.0 Bar	5.0 Bar
167.LHBM	2.2	6.5	-	9.2	12.7	16.2	18.7	22.1	-	-

All dimensions are in millimetres unless otherwise stated. The information contained on this page was correct at date of issue. Fitting dimensions are provided as a guide only. Some variation may occur due to manufacturing tolerances. We pursue a policy of continuing improvement in design and performance of our products and so reserve the right to change specifications without prior notice.

THE TUNBRIDGE WELLS
Brassware Co.

167.LHBM - EC05: Mono Basin Mixer (Inc Sprung Waste)



NO.	CODE	DESCRIPTION	QTY
1	EC05-01	INDICE	1
2	EC05-02	SCREW	1
3	EC05-03	HANDLE	1
4	EC05-04	PVC COVER	1
5	EC05-05	CARTRIDGE NUT	1
6	EC05-06	35 UP-SEAL CARTRIDGE	1
7	EC05-07	BODY	1
8	EC05-08	BASE PLATE	1
9	EC05-09	SCREW	1
10	EC05-10	WASHER	1
11	EC05-11	M12*1*400 FLEXI TAILS	1 PAIR
12	EC05-12	M6 FIXING KIT	1
13	EC05-13	WASHER	1
14	EC05-14	AERATOR	1
15	EC05-15	M24*1 NOZZLE	1