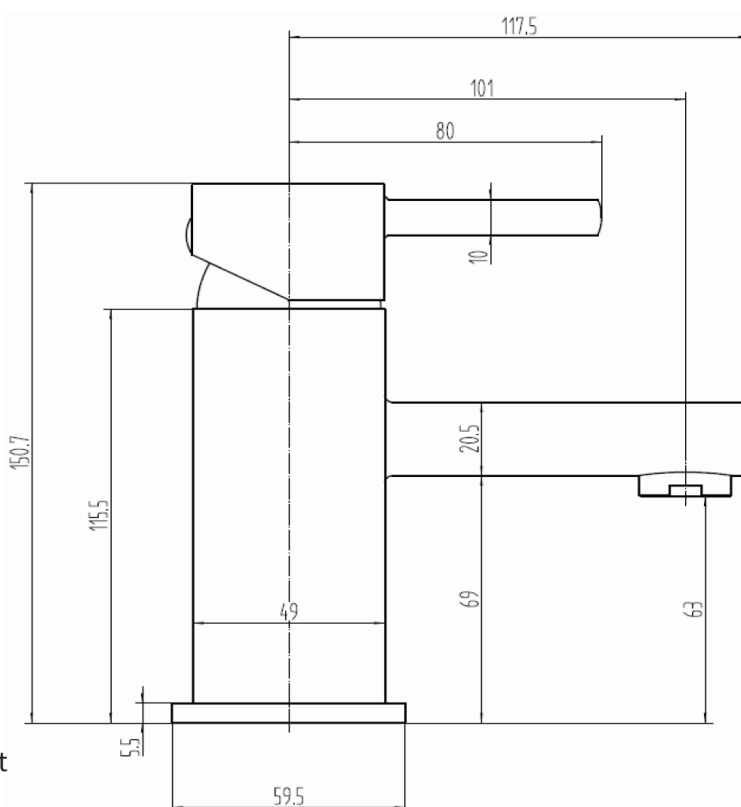


# DATA SHEET

THE TUNBRIDGE WELLS  
Brassware Co.

## Frant Mono Basin Mixer (Chrome)



- Product Code:** 167.FRBM
- Construction:** Brass Body (HPb59-1), equivalent to BS CZ122 / EN CW617N / CuZn40Pb2; Zinc-alloy Handle & Base plate
- Finishes:** Chrome plated to BS EN 248
- Water Pressure:** Min. 0.1 bar, Max. 6.0 bar
- Plumbing Systems:** Suitable for all plumbing systems, Hot and Cold water pressure preferably balanced. Max. supply pressure differential requirement no greater than 5:1
- Standards:** Complies with BS6920, BS EN200
- Cartridge:** 40mm Ceramic disc cartridge

- Net Weight:** 1014g (Tap only)
- Fitting:** UK: M10 x 400mm G1/2" BSP Female Flexi Tails (4.5mm bore)
- Aerator:** Spout aerator
- Packaging:** 34 x 23 x 30cm / carton (10 boxes), Dimension: 25.5 x 17 x 8cm / box; Weight: 1.50 Kg / box
- Guarantee:** 10 years against manufacturing faults (Excluding serviceable parts)
- Additional Information:** supplied with G1 1/4" sprung waste

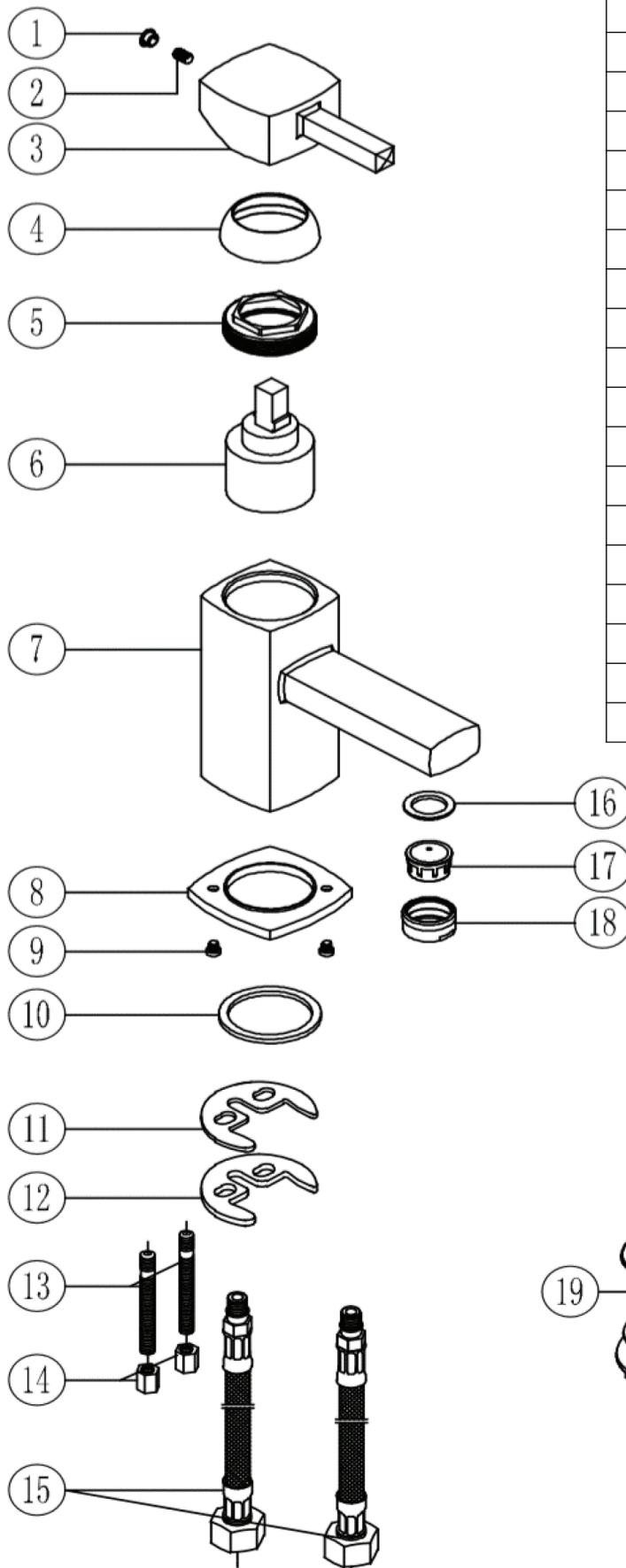
### Flow Rates (litres per minute)

System Pressure	0.1 Bar	0.2 Bar	0.3 Bar	0.5 Bar	1.0 Bar	1.5 Bar	2.0 Bar	3.0 Bar	4.0 Bar	5.0 Bar
167.FRBM	4.0	4.5	-	8.0	12.6	-	16.8	20.8	-	-

All dimensions are in millimetres unless otherwise stated. The information contained on this page was correct at date of issue. Fitting dimensions are provided as a guide only. Some variation may occur due to manufacturing tolerances. We pursue a policy of continuing improvement in design and performance of our products and so reserve the right to change specifications without prior notice.

# 167.FRBM

THE TUNBRIDGE WELLS  
Brassware Co.



NO.	PARTS DESCRIPTION	QTY
1	PLASTIC COVER CAP	1
2	5*6 S/STEEL GRUB SCREW	1
3	ZINC-ALLOY HANDLE	1
4	PLASTIC HANDLE COLLAR	1
5	S/STEEL CARTRIDGE NUT	1
6	40mm CERAMIC DISC CARTRIDGE	1
7	BRASS TAP BODY	1
8	ZINC-ALLOY BASE PLATE	1
9	4*6 S/STEEL SCREW	2
10	Ø46*38*2.5 NBR WASHER	1
11	Ø47*2 RUBBER WASHER	1
12	Ø47*3 STEEL FIXING PLATE	1
13	M6x70 STEEL FIXING ROD	2
14	SW8*10 BRASS NUT	1
15	10*1 1/2*400 S/S FLEXI-TAILS	1
16	23*16*2 NBR AERATOR WASHER	1
17	24*1 PLASTIC AERATOR	1
18	24*1 BRASS AERATOR CASING	1
19	G1-1/4 BSP SPRUNG WASTE	1