

Eridge Mini Basin Mixer (Inc. Sprung Waste)



Product Codes: Matt Black 167.ERMBMBL
Brushed Brass 167.ERMBMBB
Brushed Nickel 167.ERMBMNKL

Construction: Brass Body (CuZn40Pb2),
EN CW617N (equivalent to BS CZ122)
Zinc-alloy handle

Water Pressure: Min. 0.2 bar, Max. 6.0 bar

Plumbing Systems: Suitable for all plumbing systems,
Hot and Cold water pressure pref balanced
Max. supply pressure differential
requirement no greater than 5:1

Standards: Complies with BS6920, BS EN200

Cartridge: 35mm ceramic disc cartridge

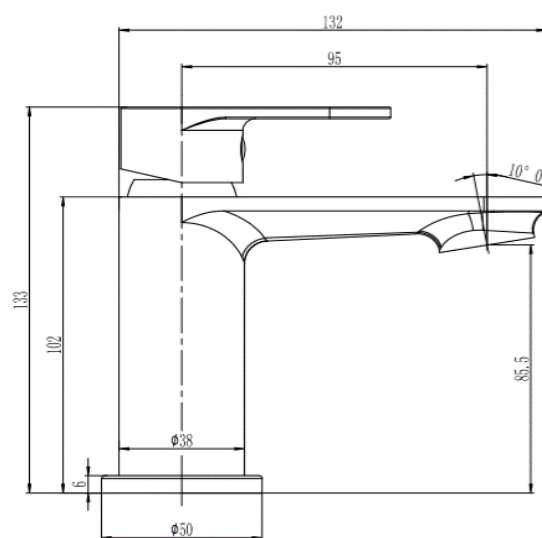
Aerator: M24*1 Spout aerator

Fitting: UK: M10 x 350mm G½” BSP female flexi tails

Packaging: 27 x 24.5 x 37.5cm / carton (10 boxes)
Dimension: 23.5 x 13 x 7cm / box
Weight: 1.10Kg / box

Guarantee: 5 years against manufacturing faults
(excluding serviceable parts)

Additional Information: Supplied with G1¼” Sprung Waste



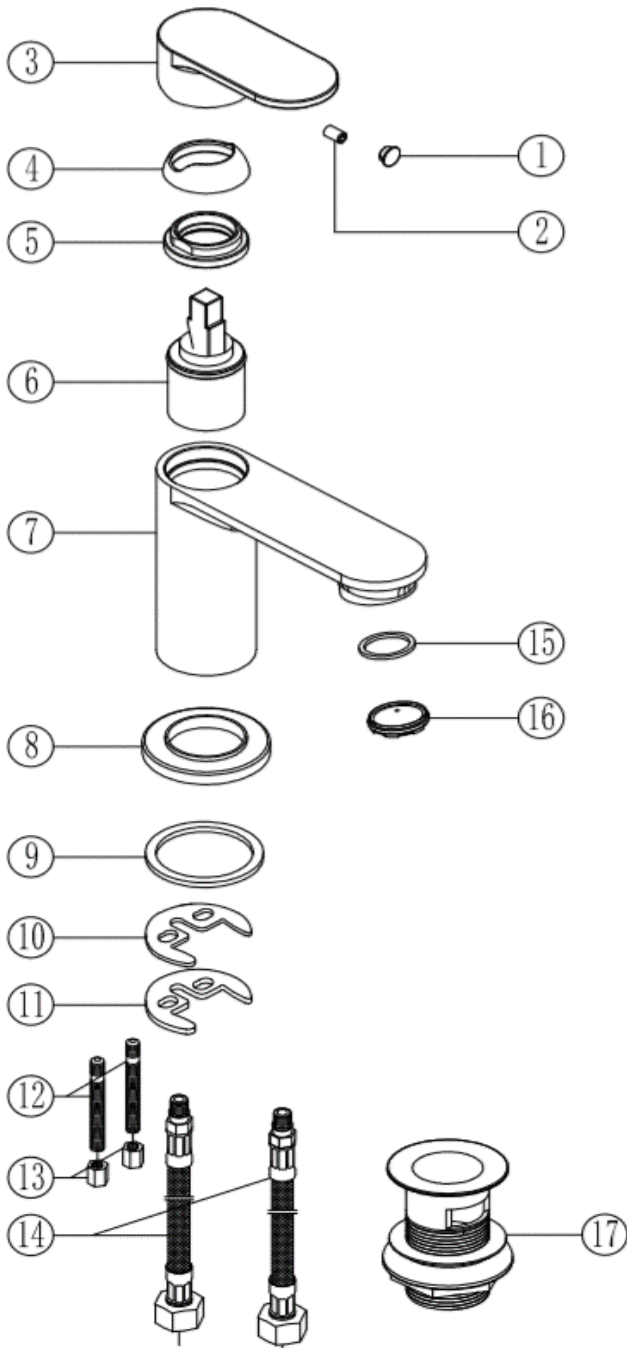
Flow Rates (Litres per minute)

System Pressure	0.1 Bar	0.2 Bar	0.3 Bar	0.5 Bar	1.0 Bar	1.5 Bar	2.0 Bar	3.0 Bar	4.0 Bar	5.0 Bar
167.ERMBM**	-	4.4	-	6.2	8.8	10.6	12.5	15.1	-	-

All dimensions are in millimetres unless otherwise stated. The information contained on this page was correct at date of issue. Fitting dimensions are provided as a guide only. Some variation may occur due to manufacturing tolerances. We pursue a policy of continuing improvement in design and performance of our products and so reserve the right to change specifications without prior notice.

167.ERMBM**

THE TUNBRIDGE WELLS
Brassware Co.



NO.	ITEM	QTY
1	ABS COVER CAP	1
2	S/S HANDLE GRUB SCREW	1
3	ZINC-ALLOY HANDLE	1
4	HANDLE COLLAR	1
5	CARTRIDGE NUT	1
6	35MM CERAMIC CARTRIDGE	1
7	TAP BODY	1
8	BASE PLATE	1
9	NBR WASHER	1
10	HORSE-SHOE RUBBER WASHER	1
11	HORSE-SHOE STEEL PLATE	1
12	FIXING ROD	2
13	FIXING NUT	2
14	FLEXI-TAILS	2
15	AERATOR WASHER	1
16	24*1 AERATOR	1
17	G1-1/4" SPRUNG WASTE	1