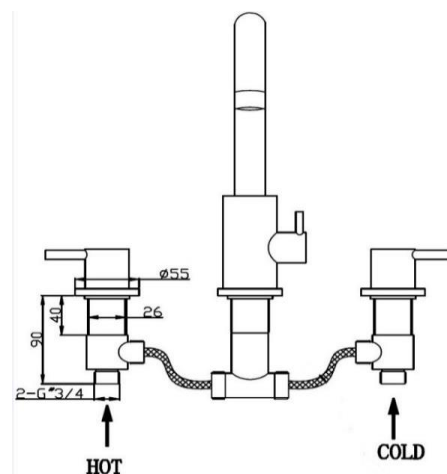
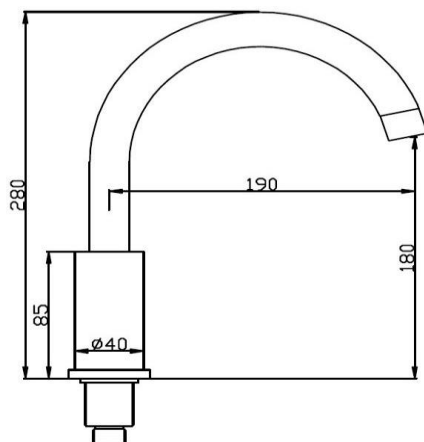


DATA SHEET

THE TUNBRIDGE WELLS
Brassware Co.

Bowl Deck Mounted 3TH Basin Mixer

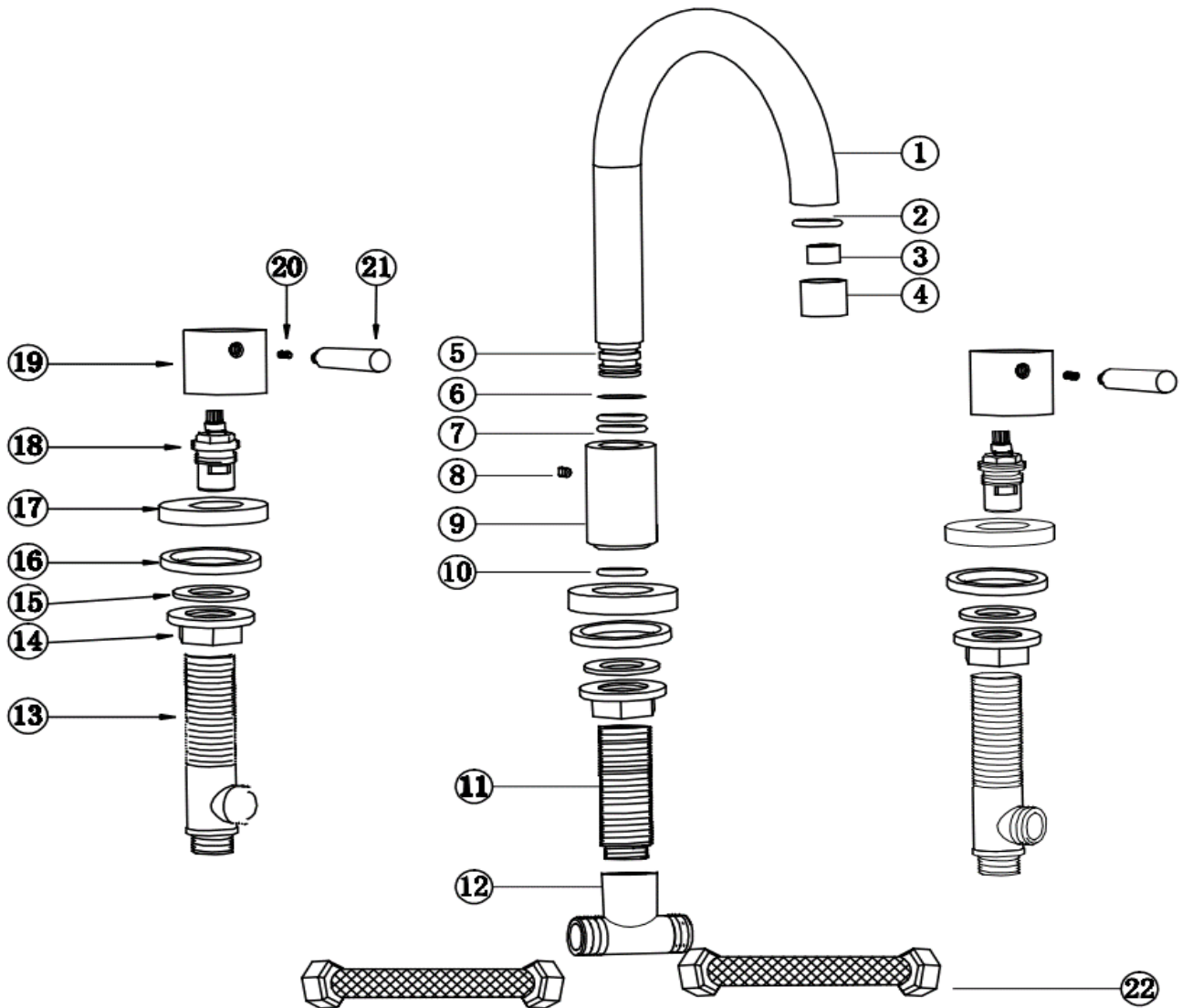
- Product Codes:** Chrome 167.BWDM3BM
Matt Black 167.BWDM3BMBL
- Construction:** Brass Body (CuZn40Pb2),
EN CW617N (equivalent to BS CZ122)
Zinc-alloy handles
- Water Pressure:** Min. 0.2 bar, Max. 6.0 bar
- Plumbing Systems:** Suitable for all plumbing systems,
hot and cold water pressure preferably balanced Max.
supply pressure differential requirement no greater than 5:1
- Standards:** Complies with BS5412, BS EN200
- Cartridge:** ¼ turn 3/4" ceramic disc valves
- Aerator:** Neoperl spout aerator
- Fitting:** Brass G1/2" BSP tails (hot and cold)
- Packaging:** 46 x 31.5 x 38cm / carton (4 boxes)
Dimension: 45 x 30.5 x 9cm / box
Weight: 2.13Kg / box
- Guarantee:** 10 years against manufacturing faults (excluding serviceable parts)
- Additional Information:** Supplied with 1.5m smooth PVC hose, outlet hose elbow, single mode ABS handset & wall mounted ABS holder



Flow Rates (litres per minute)

System Pressure	0.1 Bar	0.2 Bar	0.3 Bar	0.5 Bar	1.0 Bar	1.5 Bar	2.0 Bar	3.0 Bar	4.0 Bar	5.0 Bar
167.BWDM3BM**	-	4.7	-	6.9	10.2	-	14.9	17.6	-	-

All dimensions are in millimetres unless otherwise stated. The information contained on this page was correct at date of issue. Fitting dimensions are provided as a guide only. Some variation may occur due to manufacturing tolerances. We pursue a policy of continuing improvement in design and performance of our products and so reserve the right to change specifications without prior notice.



11	THREAD BAR	1	22	FLEXI	2
10	O-RING	1	21	HANDLE	2
9	BODY	2	20	GRUB	2
8	GRUB	2	19	SHROUD	2
7	O-RING	2	18	CARTRIDGE	2
6	WASHER	1	17	BASE PLATE	3
5	CONNECTOR	2	16	WASHER	3
4	NOZZLE	1	15	WASHER	3
3	AERATOR	1	14	NUT	3
2	WASHER	1	13	FITTING BAR	2
1	SPOUT	1	12	CONNECTOR	1
No.	DESCRIPTION	QTY	No.	DESCRIPTION	QTY